

PUBLIC EXHIBITION FACTSHEET

DRAFT ST MARYS (BYRNES CREEK) CATCHMENT FLOODPLAIN RISK MANAGEMENT STUDY AND PLAN

HAVE YOUR SAY

You are invited to have your say about the Draft St Marys (Byrnes Creek) Floodplain Risk Management Study and Plan, which is on public exhibition from **Thursday 24 October to Thursday 21 November 2019**.

You can view the draft study online at:

- www.Penrith.city/fps and click on the catchment area tab
- yoursaypenrith.com.au

In person at:

- Penrith Library and Civic Centre
601 High Street, Penrith,
- St Marys Library,
207-209 Queen St, St Marys

COMMUNITY DISPLAY

You are warmly invited to attend an information session that will be held at:

**St Marys Memorial Hall,
Wednesday 6 November 2019,
from 6pm-8pm**

Corner of Great Western Highway and Mamre Road, St Marys.
Presentation starts at 6.30pm.

We encourage you to come along to view the material in more detail and take the opportunity to ask Council's staff and the consultants any questions as well as provide you feedback about the draft report and its recommendations.

SUBMISSIONS

You can submit your comments in writing, addressed to the General Manager and titled '*St Marys (Byrnes Creek) Catchment Floodplain Risk Management Study and Plan - Public Comment*' by:

Email: council@penrith.city

Mail: Penrith City Council, PO Box 60
Penrith NSW 2751

In person: Penrith Civic Centre.

Submissions close:

5pm Thursday 21 November 2019.

FLOODPLAIN RISK MANAGEMENT STUDY AND PLAN PROCESS



BACKGROUND AND STUDY AREA

As part of its city-wide Floodplain Risk Management program, Penrith City Council has engaged engineering consultant Lyall and Associates to prepare and develop the Draft Floodplain Risk Management Study and Plan for St Marys Catchment. The catchment covers the portion of St Marys that is bounded by the M4 Motorway to the south, the Western Railway Line to the north, St Marys Levee to the east and South Creek to the west.

The study is prepared under the guidance of the Penrith City Floodplain Management Committee. The Committee includes representatives from the local community, Councillors, Council staff, neighbouring councils and state agency representatives including the State Emergency Services (SES), the Department of Planning, Industry and Environment, and Infrastructure NSW.

The study and plan are prepared in accordance with the NSW Flood Prone Land policy and the process outlined in its supporting manual.

At the start of the study in January 2017, we consulted with the community to identify options for reducing the impacts of flooding on existing development and to prepare guidelines for future development in accordance with best floodplain management principles. The previous feedback was used in conjunction with detailed modelling and analysis to draft the Floodplain Risk Management Study and Plan. This aims to reduce the flood risk and minimise the long-term impact of flooding on the community, by recommending appropriate management measures. The proposed measures in the draft plan are provisionally prioritized on their economic, social and environmental benefits and their feasibility.

Altogether 11 measures are recommended in three groups:

• **Property modification measures**

Items such as modifications to individual properties such as house raising, flood proofing, and the adoption of development control policies. This draft plan does not recommend any house raising or voluntary purchasing.

• **Response modification measures**

Items such as modifying the way emergency

responses are currently handled (by organisations such as the SES, Police, Fire and Ambulance) and improving community awareness and education about flooding.

• **Flood modification measures**

Items such as structural works (e.g. stormwater drainage upgrade, construction of detention basins, creek rehabilitation, and earthworks to change flood behavior and reduce direct flood damage).

RECOMMENDED FLOOD MANAGEMENT MEASURES FOR IMPLEMENTATIONS

The *recommended* options for implementation are outlined below, together with their measure numbers as listed in the Floodplain Risk Management and Study Report.

Property modification recommendations

- Implement development controls based by updating the Penrith Development Control Plan 2014. (Measure 1)
- Update the Penrith LEP 2010. (Measure 2)

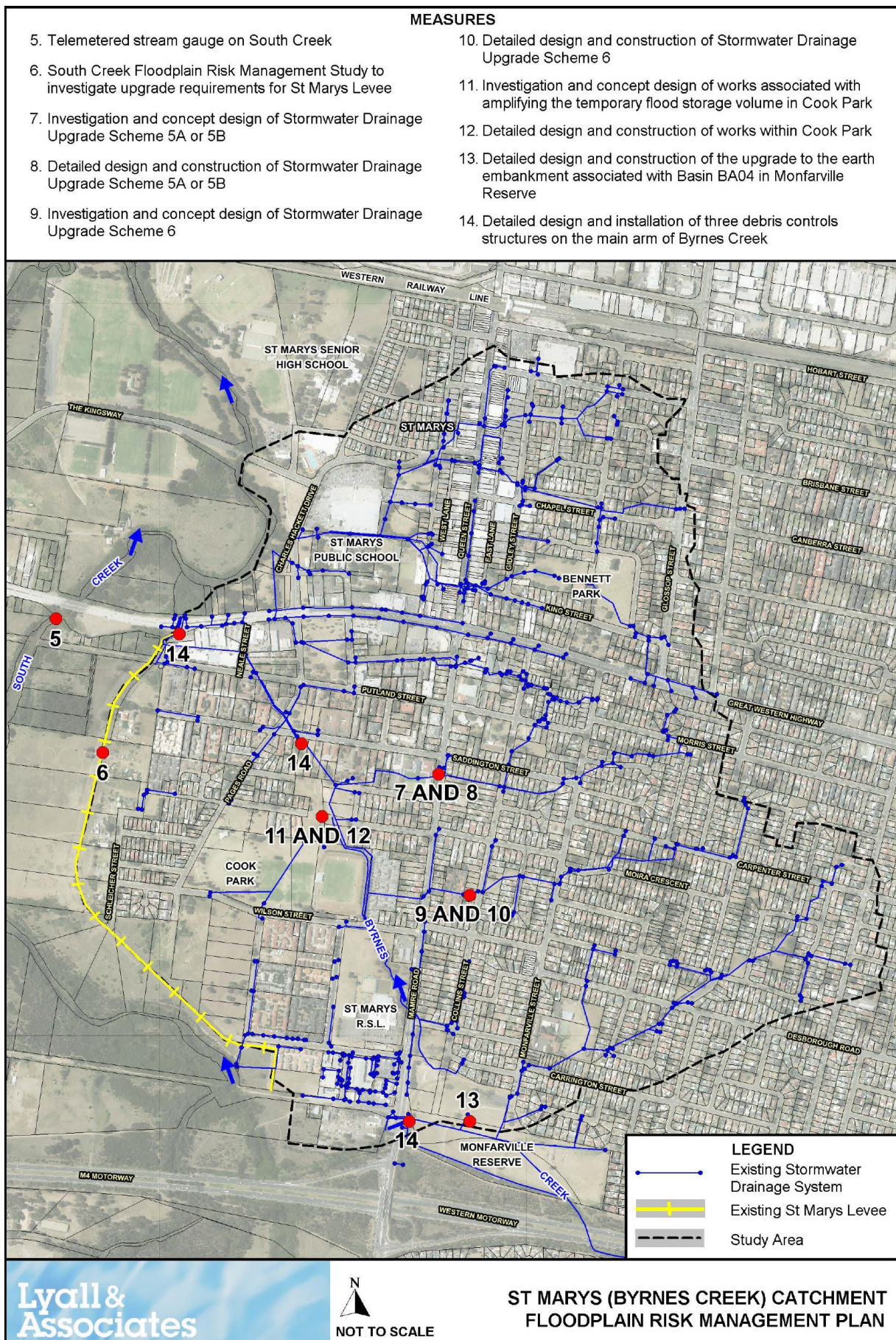
Response modification recommendations

- Improvements to emergency response planning. (Measure 3)
- Implement a flood awareness and education program. (Measure 4)

Flood modification recommendations (refer to attached map)

- Install telemetered stream gauge on South Creek. (Measure 5)
- South Creek FRMS&P to investigate upgrade requirements for the St Marys Levee. (Measure 6)
- Investigate, design and construct a stormwater drainage system upgrade in Mamre Road between Ellis and Saddington Streets. (Measures 7 & 8)
- Investigate, design and construct a new detention basin in the reserve located on western side of Collins Street. (Measures 9 & 10)
- Investigate, design and construct flood mitigation works along Byrnes Creek in Cook Park. (Measures 11 & 12)
- Upgrade the earth embankment associated with Basin BA04 in Monfarville Reserve. (Measure 13)
- Design and construct three debris control structures on the main arm of Byrnes Creek. (Measure 14)

CATCHMENT AREA AND RECOMMENDED WORKS



FOR MORE INFORMATION ABOUT THE STUDY,
CALL MR MYL SENTHILVASAN ON 4732 777