

WRONG DIRECTION OF TRAVEL

WHY IS IT ILLEGAL?

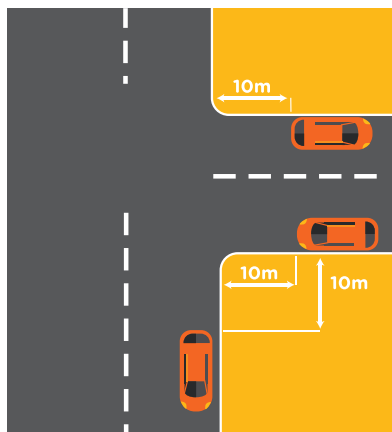
Parking in the wrong direction of travel is dangerous as the parked vehicle must travel on the wrong side of the road when departing. This manoeuvre exposes other road users to the risk of a head on collision.



- Not parallel park in direction of travel, penalty exceeds \$268.
- School Zone offence penalty exceeds \$344 and two Demerit Points.

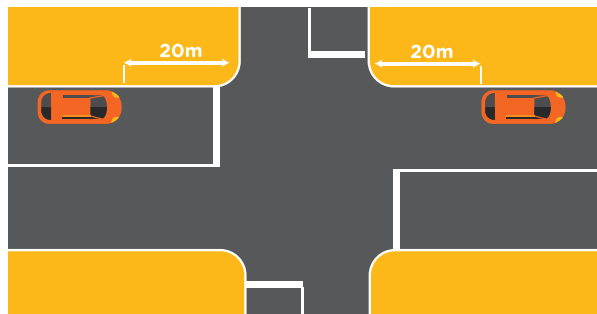
PARKING TOO CLOSE TO INTERSECTIONS

Parking within 10 metres of an intersecting road at an intersection without traffic lights is an offence unless the posted sign states otherwise.



- Stop within 10 metres of an intersection (no traffic lights) penalty exceeds \$344 and two Demerit Points.

Parking within 20 metres of an intersecting road with traffic lights is an offence unless the posted sign states otherwise.



- Stop within 20 metres of an intersection (traffic lights) penalty exceeds \$344 and two Demerit Points.

OBSTRUCTING DRIVEWAYS, RAMPS, PATHS AND PASSAGEWAYS

WHY IS IT ILLEGAL?

Obstructing a driveway even if it is to your own property is an offence as it prohibits access for emergency services such as the police, the fire brigade and ambulances.

- Driveway offence penalty exceeds \$268 or \$344 in School Zone plus two Demerit Points.

Obstructing a ramp, path or passageway can limit access points for prams and mobility impaired pedestrians, resulting in them having to use the roadway.



- Obstruct access to ramp/path/passageway penalty exceeds \$268 or \$344 in School Zone plus two Demerit Points.

PENRITH COUNCIL PARKING EDUCATION INFORMATION

PART 1

SAFE AND LEGAL PARKING

COMMONLY MISUNDERSTOOD PARKING RULES

Learn more about parking and vehicle restrictions in the Penrith City Council local government area to help avoid infringements and keep the community safe.

PENRITH
CITY COUNCIL

NO STOPPING AND NO PARKING SIGNS

NO STOPPING SIGN

You must not stop your vehicle at any point on the road or kerb, unless there is a medical emergency or another type of emergency.

Some “no stopping” areas are indicated by a solid yellow edge line. Hours of operation may apply to some signs.



- **Disobey No Stopping Sign penalty exceeds \$268.**
- **Disobey No Stopping Sign within School Zone penalty exceeds \$344 and two Demerit Points.**

NO PARKING SIGN

You must not stop on a length of road to which a “No Parking” sign applies, unless you are dropping off or picking up passengers or goods.

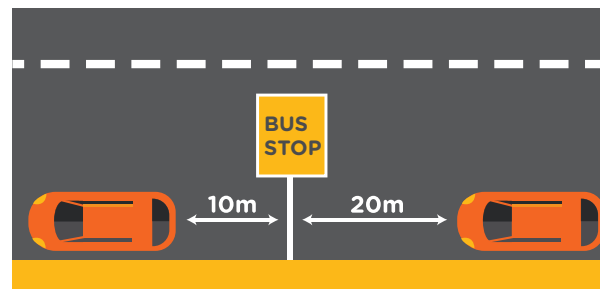
You must not leave the vehicle unattended and remain in or within three metres of the vehicle. You must complete dropping off or picking up of passengers or goods within two minutes. Hours of operations may apply to some signs.



- **Disobey No Parking Sign penalty exceeds \$114.**
- **Disobey No Parking Sign within School Zone penalty exceeds \$191 and two Demerit Points.**

BUS STOP SIGNS

You must not stop on the road within 20 metres of approaching the bus stop sign and within 10 metres of departure, unless the posted sign states otherwise.



- **Stop at or near bus stop sign penalty exceeds \$268.**
- **Stop at or near bus stop sign in School Zone penalty exceeds \$344 and two Demerit Points.**



PARKING ON FOOTPATHS AND NATURE STRIPS IN BUILT-UP AREAS

WHY IS IT ILLEGAL?

Parking on footpaths can damage the concrete surface and create ruts on grassed nature strips, resulting in trip hazards that may cause serious injury to pedestrians.

Parking on the nature strip is an obstruction to pedestrians, postal delivery services, people in wheel chairs or pushing prams.

- **Stop on path/strip in built-up area penalty exceeds \$268.**
- **Stop on path/strip in built-up area within School Zone penalty exceeds \$344 and two Demerit Points.**

