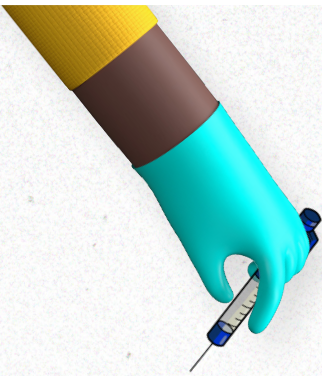


**NEVER
WASTE A
CHANCE
TO BE
SAFE WITH
SHARPS**





Sharp thinking sorted

We all know how important it is to never waste a chance to dispose of waste thoughtfully and correctly.

But there are some times when you need to be more than thoughtful.

You need to be safe.

And one of those times is when it comes to disposing of sharps.

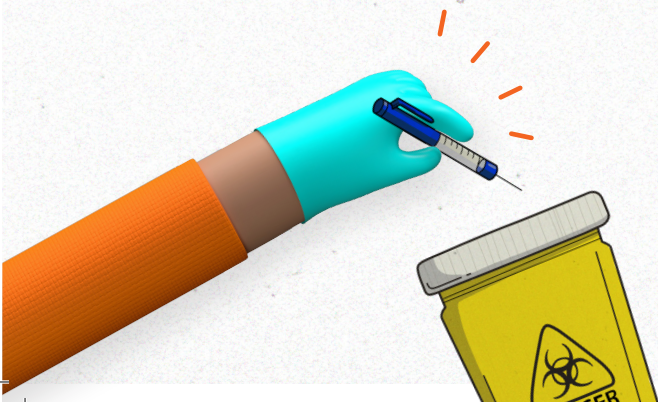
What exactly are sharps?

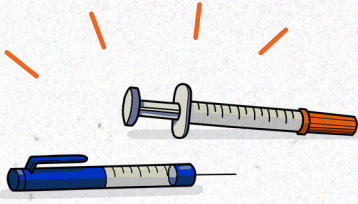
When it comes to waste, when we say 'sharps', we mean needles, syringes, diabetic medication, lancets and similar equipment. These include sharps used in the home and within business practices.

In other words, anything sharp that could harm you or others.

How can I dispose of sharps safely?

Special, purpose-made sharps containers are available from most pharmacies and are the best way to dispose of any sharps. Alternatively, you can use any puncture-resistant rigid plastic containers, e.g. an ordinary empty laundry liquid detergent container.





Then, you need to take that container to any free, drop-off location near you.

Do not put sharps in the green-lidded FOGO bin or the yellow-lidded recycling bin.

Generally, any of the following locations are a community sharps disposal service:

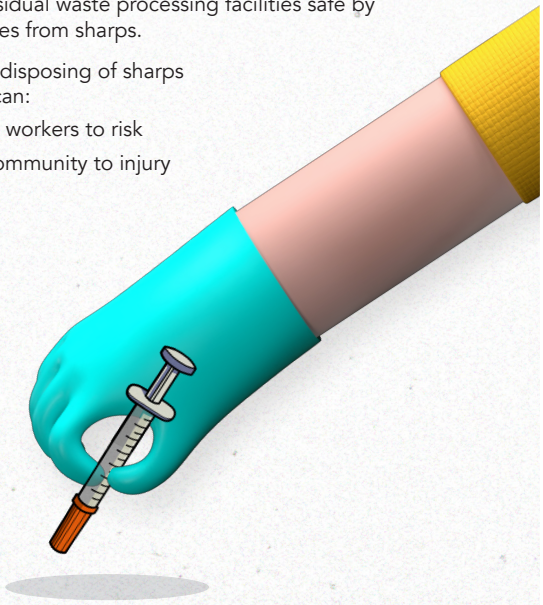
- All public hospitals in NSW
- Some pharmacies and chemists
- Health centres

Why is safe sharps disposal so important?

Sharps are a problem waste and it is important to dispose of them correctly to keep you and the workers at our FOGO, recycling and residual waste processing facilities safe by preventing injuries from sharps.

Not sorting and disposing of sharps waste correctly can:

- Expose waste workers to risk
- Expose the community to injury





Where to from here?

There are free drop-off locations you can take your sharps container to.

Cranebrook Community Health Centre (access 24/7)
39 Laycock Street, Cambridge Park

**Nepean Community and Neighbourhood Services
Koolyangarra Aboriginal Child and Family Centre (access 24/7)**
Kington Place, Cranebrook

**Lemongrove, Community Health Centre
(access within opening hours)**
Gate 1, 13-29 Gascoigne Street, Penrith

Penrith Community Health Centre (access 24/7)
Cnr Soper Place & Lawson Street, Penrith

Nepean Hospital South Court (NSP) (access 24/7)
Opposite 46a Derby St, Kingswood, Nepean Hospital

St Mary's Community Centre (access 24/7)
Cnr Chapel & Gidley St, St Marys

Mediadvise Pharmacy Glenmore Park Town Centre
Glenmore Park Town Centre

Separating and sorting your waste is always important when it comes to making our waste systems more efficient, environmentally friendly and safe for our community.

Sometimes, you have to be a little sharper.

Remember, never waste a chance to be safe with sharps.
penrith.city/problemwaste

PENRITH
CITY COUNCIL

