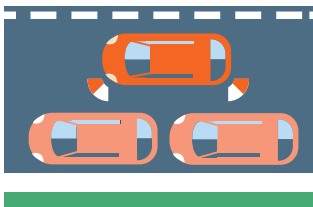


# SCHOOL ZONE SAFETY TIPS

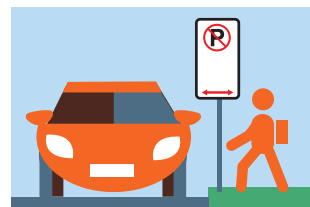
## KEEPING YOUR CHILDREN SAFE WHEN DROPPING OFF AND PICKING UP AT SCHOOL

### DOUBLE PARKING IS DANGEROUS



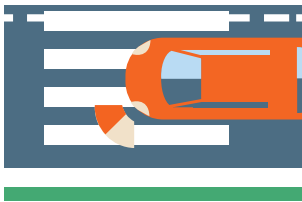
School zones are busy at peak times. If there is no space to park legally, drive to a new location or around the block.

### DROP-OFF AND PICK-UP



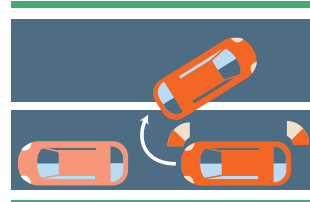
When using a 'No Parking' student drop-off and pick-up zone ("kiss and drop"), you have two minutes to set down or pick up passengers. Please remain within 3 metres of your vehicle.

### DON'T PARK ACROSS PEDESTRIAN CROSSINGS



In queued traffic, don't stop your vehicle across a pedestrian crossing.

### AVOID MAKING U-TURNS AND THREE-POINT-TURNS



U-Turns and three-point-turns increase the risk of a serious crash in school zones, especially when turning over centre lines or near crossings.

### STOP, LOOK, LISTEN AND THINK



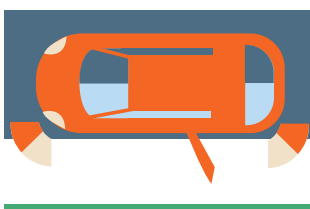
Walking is a great way to get between home and school. When walking, remember to stop, look, listen and think, even when you have right of way.

### WEAR YOUR SEATBELT



When driving, ensure children are buckled up in the correct restraint for their size and age. Wait for the vehicle to stop and park before taking off restraints.

### EXIT THE CAR SAFELY



The 'safety door' is the door that opens onto the kerb side. This is the best side for children to use when entering/exiting the vehicle.

### FAMILIARISE YOURSELF WITH PROCEDURES



Each school has its own student travel procedures designed to keep families safe. Work with your school to understand drop-off and pick-up procedures.

NSW Police and Penrith City Council Rangers can issue fines (penalty infringement notices) for NSW Road Rule offences. Please drive your vehicle and park with care around schools to protect children and families.