

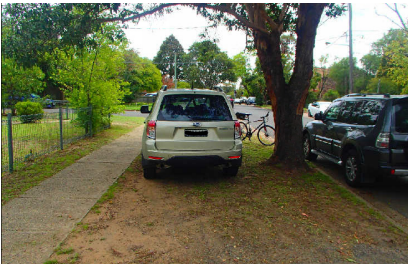
# COMMON PARKING OFFENCES

DON'T FORCE PEDESTRIANS ONTO THE ROADWAY...IT'S DANGEROUS!

Cars parking across driveways and footpaths are one of the most common obstructions to pedestrians.

All pedestrians using footpaths, especially those with disabilities, older people and the young, need an unobstructed, clear path of travel. Cars parked across the footpath force people onto the road, creating a dangerous situation.

## NATURE STRIP



PENALTIES FROM  
**\$268**

As a general rule, parking is not allowed on nature strips.

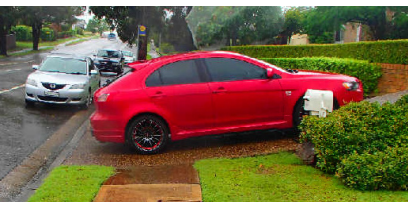
## DRIVEWAYS



PENALTIES FROM  
**\$268**

A driver must not park on or across (or partially across) a driveway blocking access to pedestrians and other vehicles.

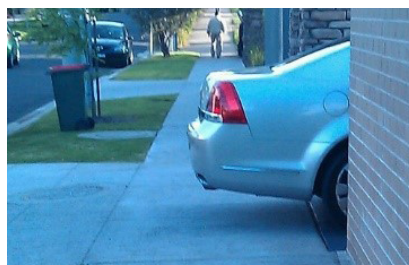
## FOOTPATHS



PENALTIES FROM  
**\$268**

A driver must not stop on a footpath. This blocks pedestrians and other footpath areas as well as sight lines for vehicles using the roadway.

## DRIVEWAYS



PENALTIES FROM  
**\$268**

A driver must not park on or across (or partially across) a driveway blocking access to pedestrians and other vehicles.