

LEGEND

26 Peak Flood level Contour (mAHD)

Peak Flood level (mAHD)

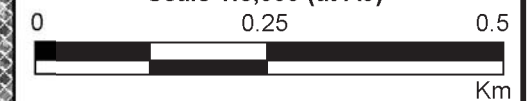
Dark Blue	<= 20	Yellow	50
Blue	25	Orange	55
Light Blue	30	Light Orange	60
Cyan	35	Red	65
Green	40	Purple	70
Light Green	45		

Notes:

Aerial photograph date: 2016
 Results presented in this figure are a combination of a 1% AEP local catchment flood with 5% AEP Nepean River flood and a 5% AEP local catchment flood with 1% AEP Nepean River flood



Scale 1:8,000 (at A3)

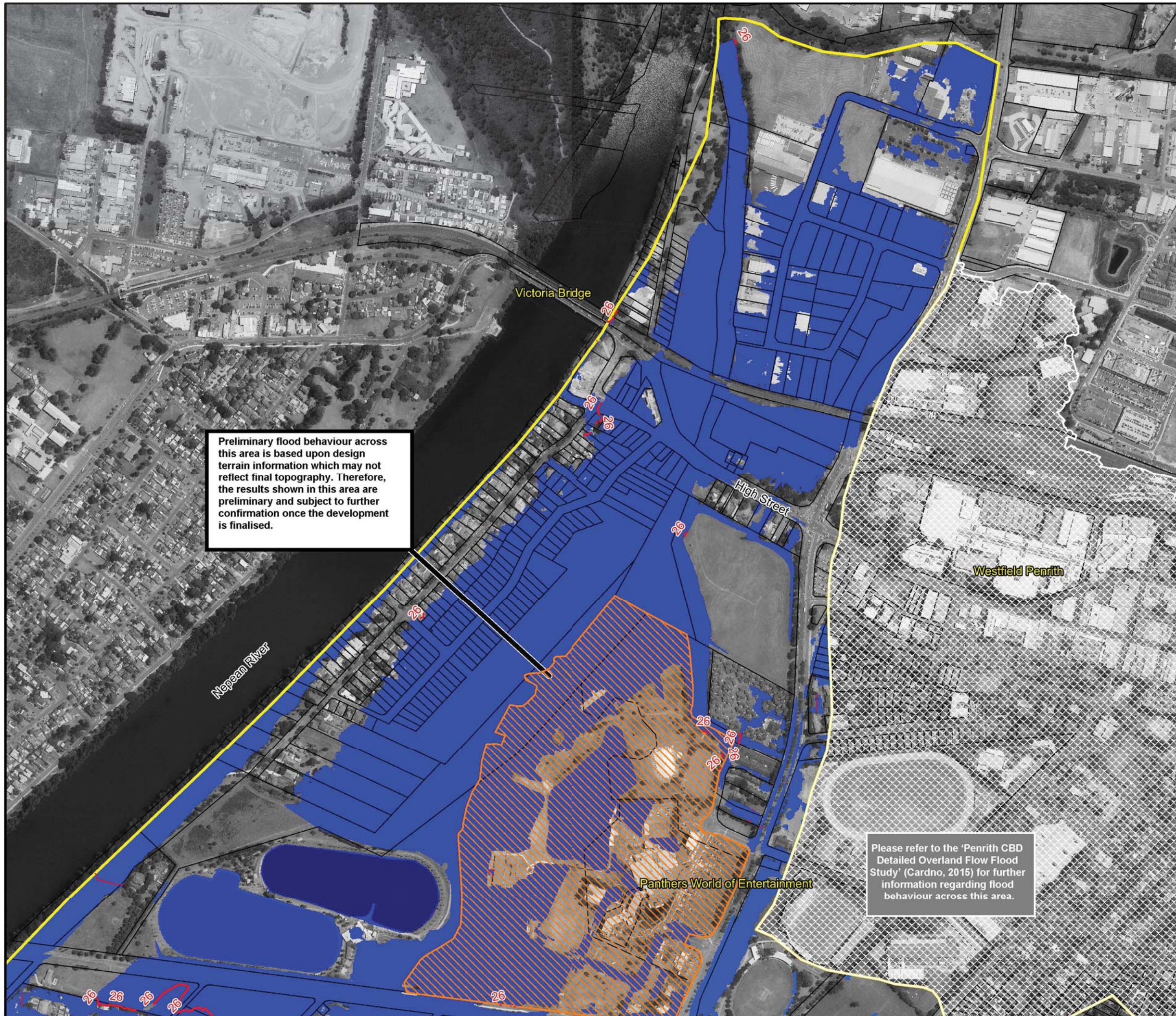


**Figure 62.1:
 Peak Water Levels
 for the 1% AEP Flood**

Prepared By:

Catchment Simulation Solutions
 Suite 2.01, 210 George St
 Sydney, NSW 2000

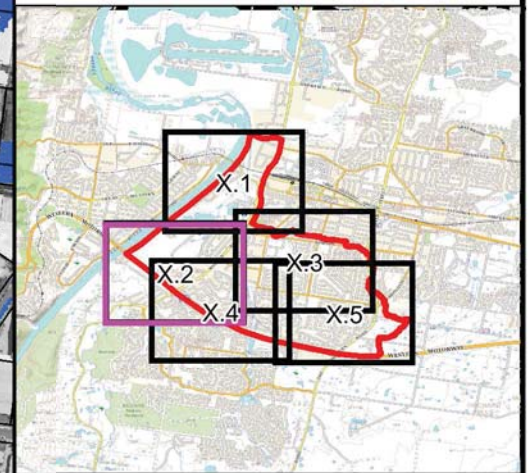
File Name: Fig62.1 - Levels for 1% AEP Flood.wor



Preliminary flood behaviour across this area is based upon design terrain information which may not reflect final topography. Therefore, the results shown in this area are preliminary and subject to further confirmation once the development is finalised.

Please refer to the 'Penrith CBD Detailed Overland Flow Flood Study' (Cardno, 2015) for further information regarding flood behaviour across this area.

PENRITH CITY COUNCIL



LEGEND

26 Peak Flood level Contour (mAHD)

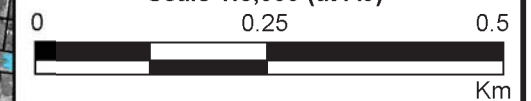
Peak Flood level (mAHD)

Dark Blue	<= 20	Yellow	50
Blue	25	Orange	55
Light Blue	30	Light Red	60
Cyan	35	Red	65
Green	40	Purple	70
Light Green	45		

Notes:
 Aerial photograph date: 2016
 Results presented in this figure are a combination of a 1% AEP local catchment flood with 5% AEP Nepean River flood and a 5% AEP local catchment flood with 1% AEP Nepean River flood



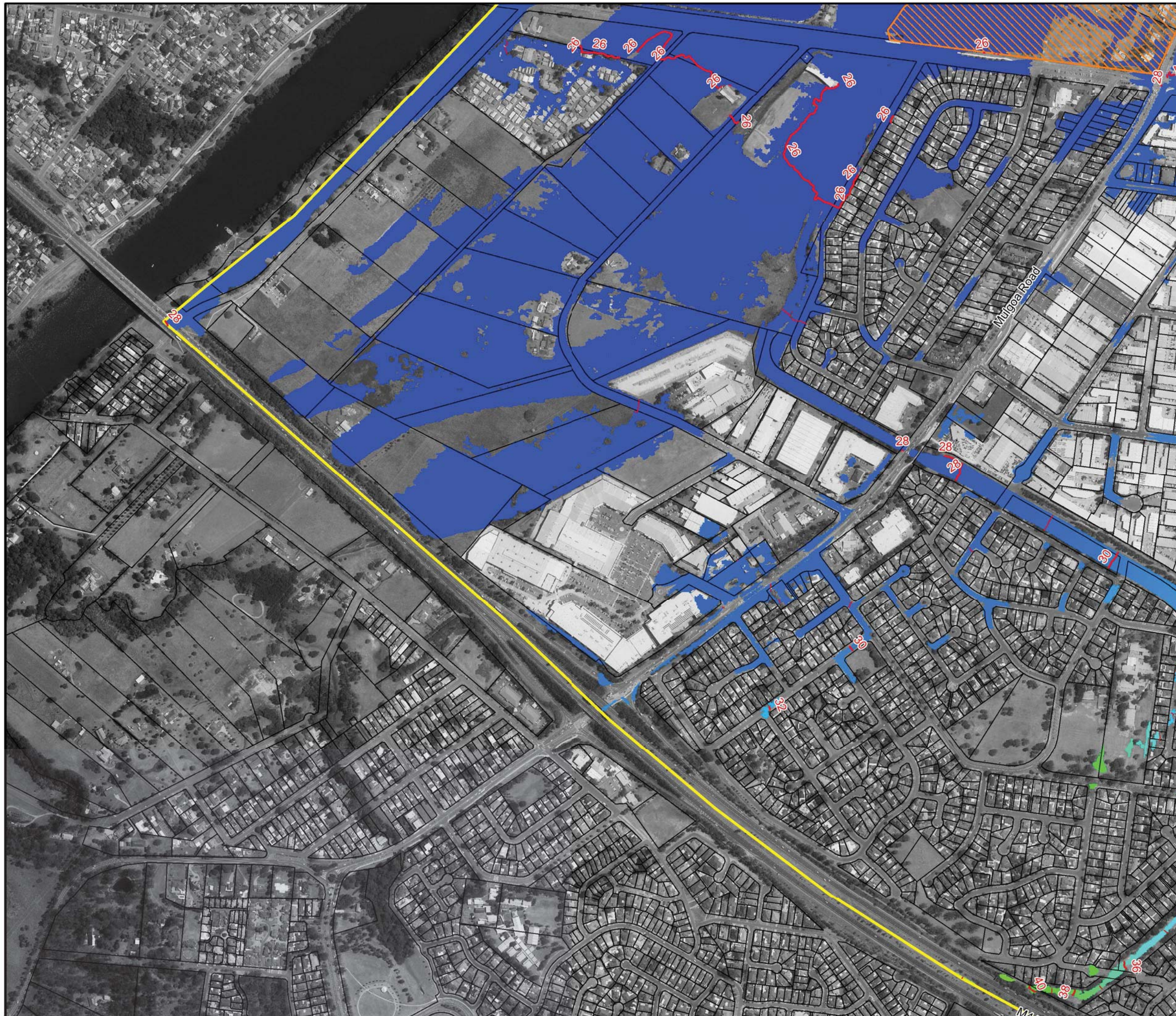
Scale 1:8,000 (at A3)



**Figure 62.2:
 Peak Water Levels
 for the 1% AEP Flood**

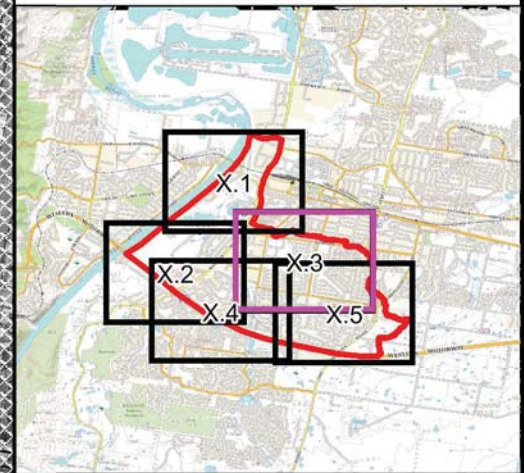
Prepared By:
Catchment Simulation Solutions
 Suite 2.01, 210 George St
 Sydney, NSW 2000

File Name: Fig62.2 - Levels for 1% AEP
 Flood.wor



Please refer to the 'Penrith CBD Detailed Overland Flow Flood Study' (Cardno, 2015) for further information regarding flood behaviour across this area.

Panthers World of Entertainment



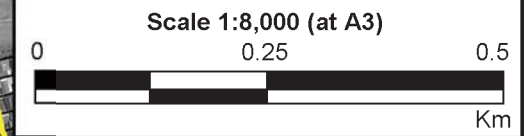
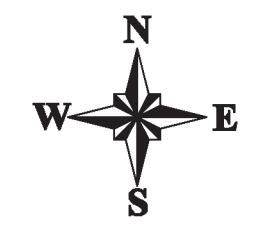
LEGEND

26 Peak Flood level Contour (mAHD)

Peak Flood level (mAHD)

Dark Blue	<= 20	Yellow	50
Blue	25	Orange	55
Light Blue	30	Red	60
Cyan	35	Dark Red	65
Green	40	Purple	70
Light Green	45		

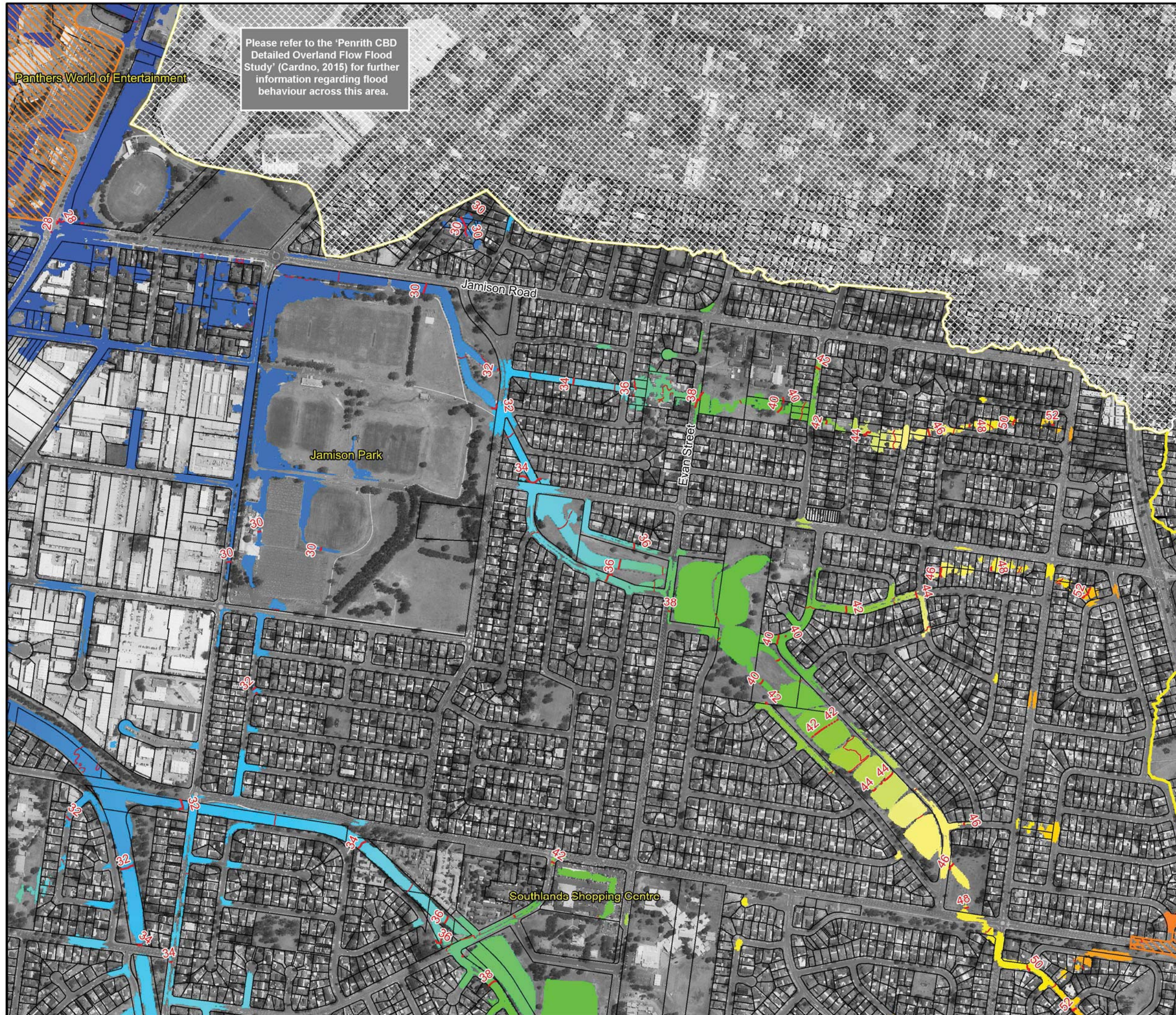
Notes:
 Aerial photograph date: 2016
 Results presented in this figure are a combination of a 1% AEP local catchment flood with 5% AEP Nepean River flood and a 5% AEP local catchment flood with 1% AEP Nepean River flood

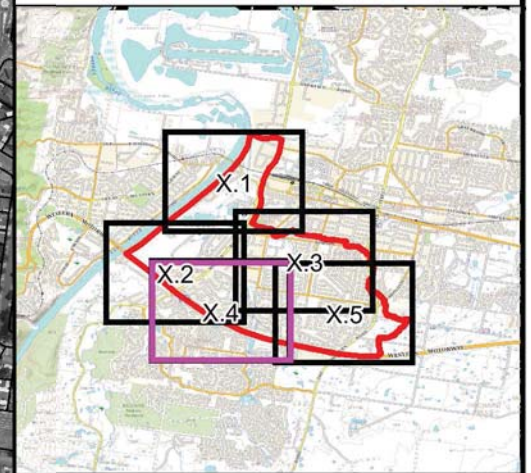


**Figure 62.3:
 Peak Water Levels
 for the 1% AEP Flood**

Prepared By:
Catchment Simulation Solutions
 Suite 2.01, 210 George St
 Sydney, NSW 2000

File Name: Fig62.3 - Levels for 1% AEP Flood.wor





LEGEND

26 Peak Flood level Contour (mAHD)

Peak Flood level (mAHD)

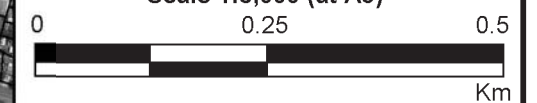
Dark Blue	<= 20	Yellow	50
Blue	25	Orange	55
Light Blue	30	Red	60
Light Cyan	35	Dark Red	65
Green	40	Purple	70
Light Green	45		

Notes:

Aerial photograph date: 2016
 Results presented in this figure are a combination of a 1% AEP local catchment flood with 5% AEP Nepean River flood and a 5% AEP local catchment flood with 1% AEP Nepean River flood



Scale 1:8,000 (at A3)



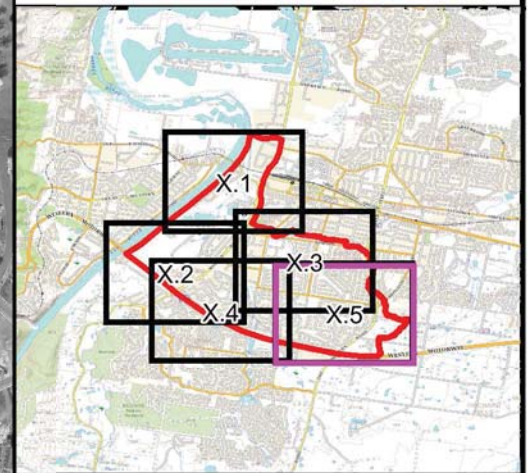
**Figure 62.4:
 Peak Water Levels
 for the 1% AEP Flood**

Prepared By:

Catchment Simulation Solutions
 Suite 2.01, 210 George St
 Sydney, NSW 2000

File Name: Fig62.4 - Levels for 1% AEP
 Flood.wor





LEGEND

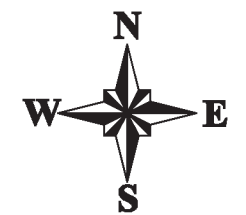
26 Peak Flood level Contour (mAHD)

Peak Flood level (mAHD)

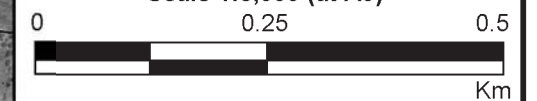
Dark Blue	<= 20	Yellow	50
Blue	25	Orange	55
Cyan	30	Light Pink	60
Light Blue	35	Red	65
Green	40	Purple	70
Light Green	45		

Notes:

Aerial photograph date: 2016
 Results presented in this figure are a combination of a 1% AEP local catchment flood with 5% AEP Nepean River flood and a 5% AEP local catchment flood with 1% AEP Nepean River flood



Scale 1:8,000 (at A3)

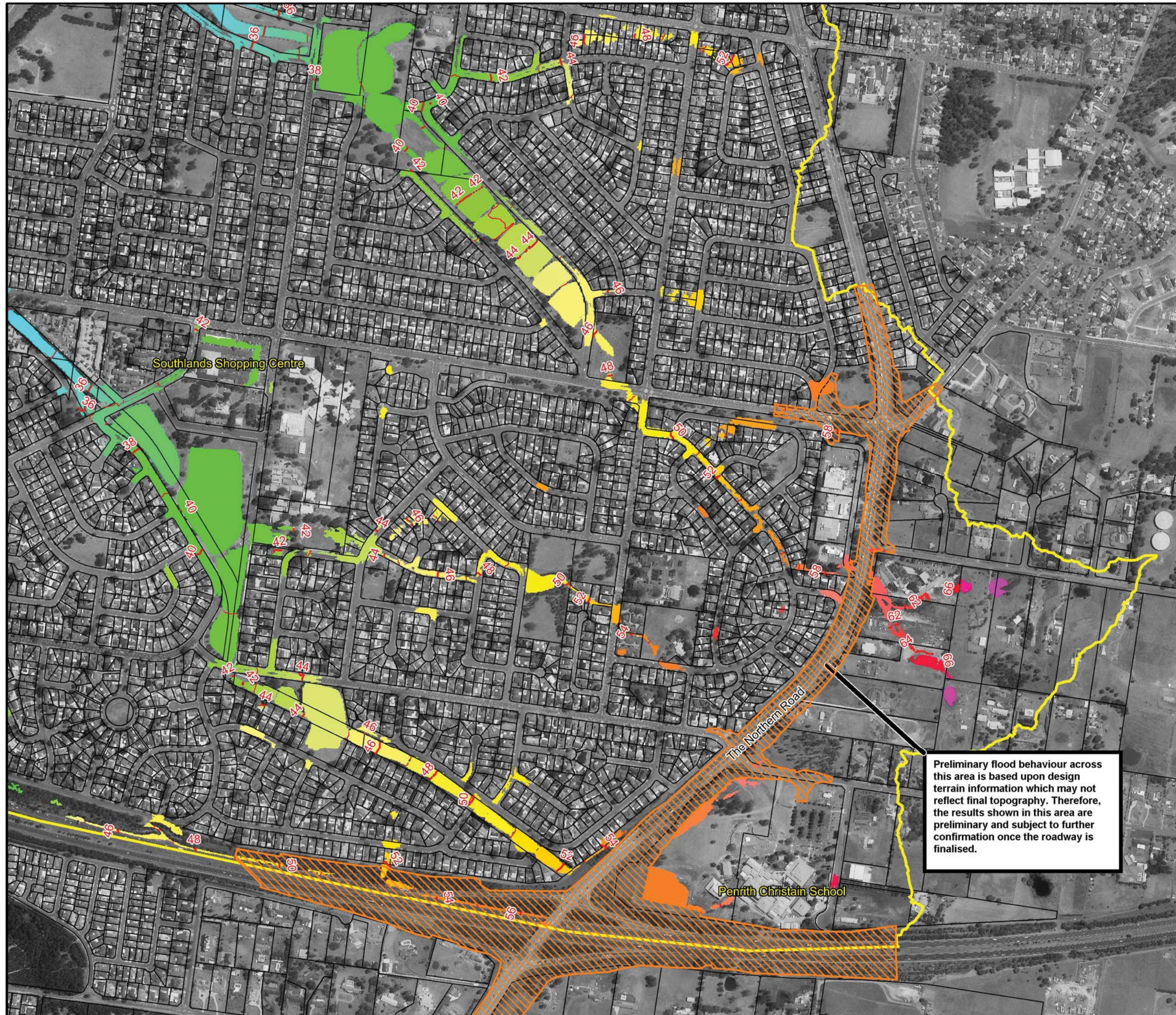


**Figure 62.5:
 Peak Water Levels
 for the 1% AEP Flood**

Prepared By:

Catchment Simulation Solutions
 Suite 2.01, 210 George St
 Sydney, NSW 2000

File Name: Fig62.5 - Levels for 1% AEP
 Flood.wor



Preliminary flood behaviour across this area is based upon design terrain information which may not reflect final topography. Therefore, the results shown in this area are preliminary and subject to further confirmation once the roadway is finalised.