

Circular precincts



Special Activation Precincts

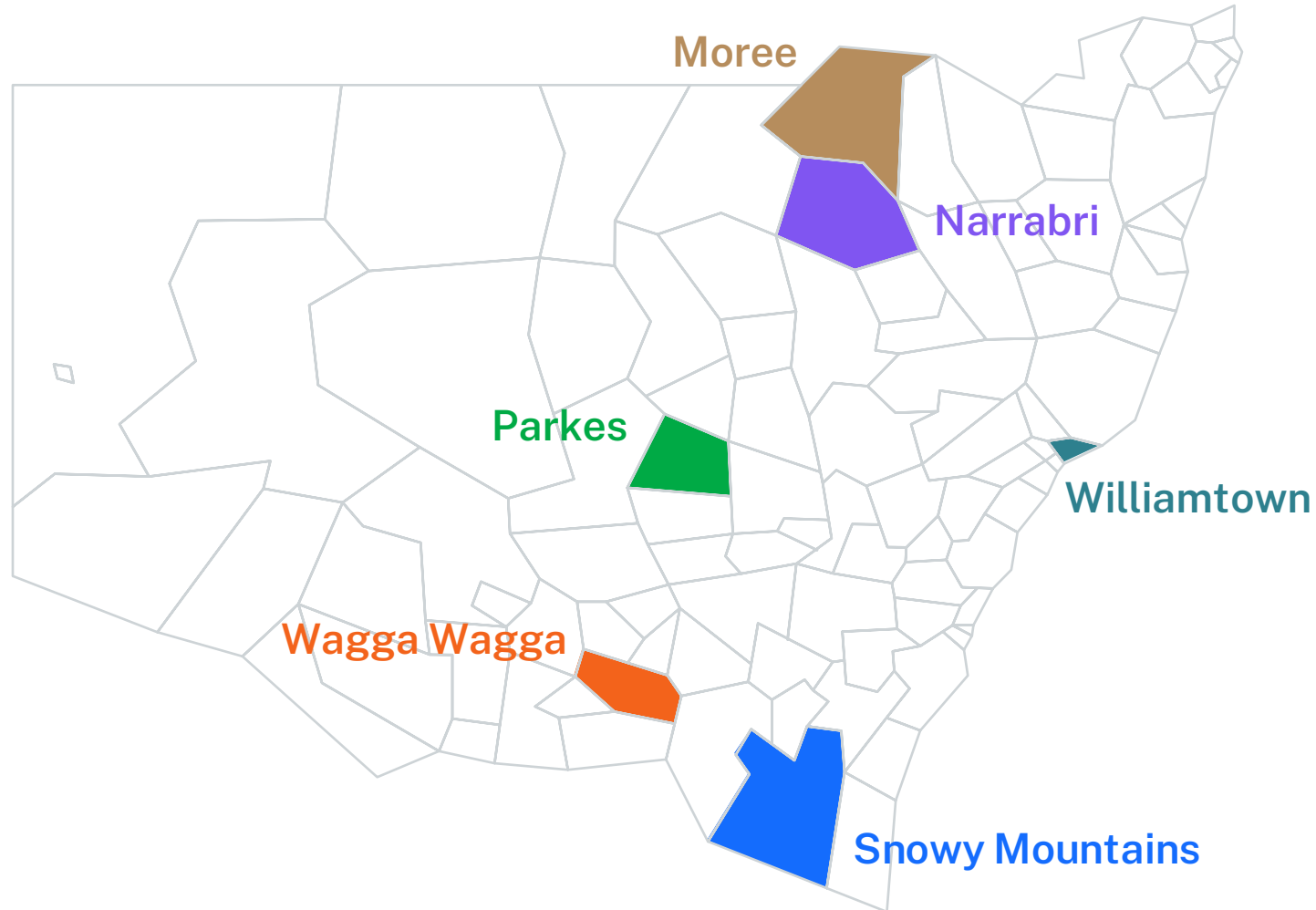


Acknowledgement of country

We acknowledge the traditional owners of country and recognise their continuing connection to land, waters and culture. We pay our respects to their elders past, present and emerging.



Special Activation Precincts



Areas with the potential to activate **state or regional significant economic development and jobs creation**

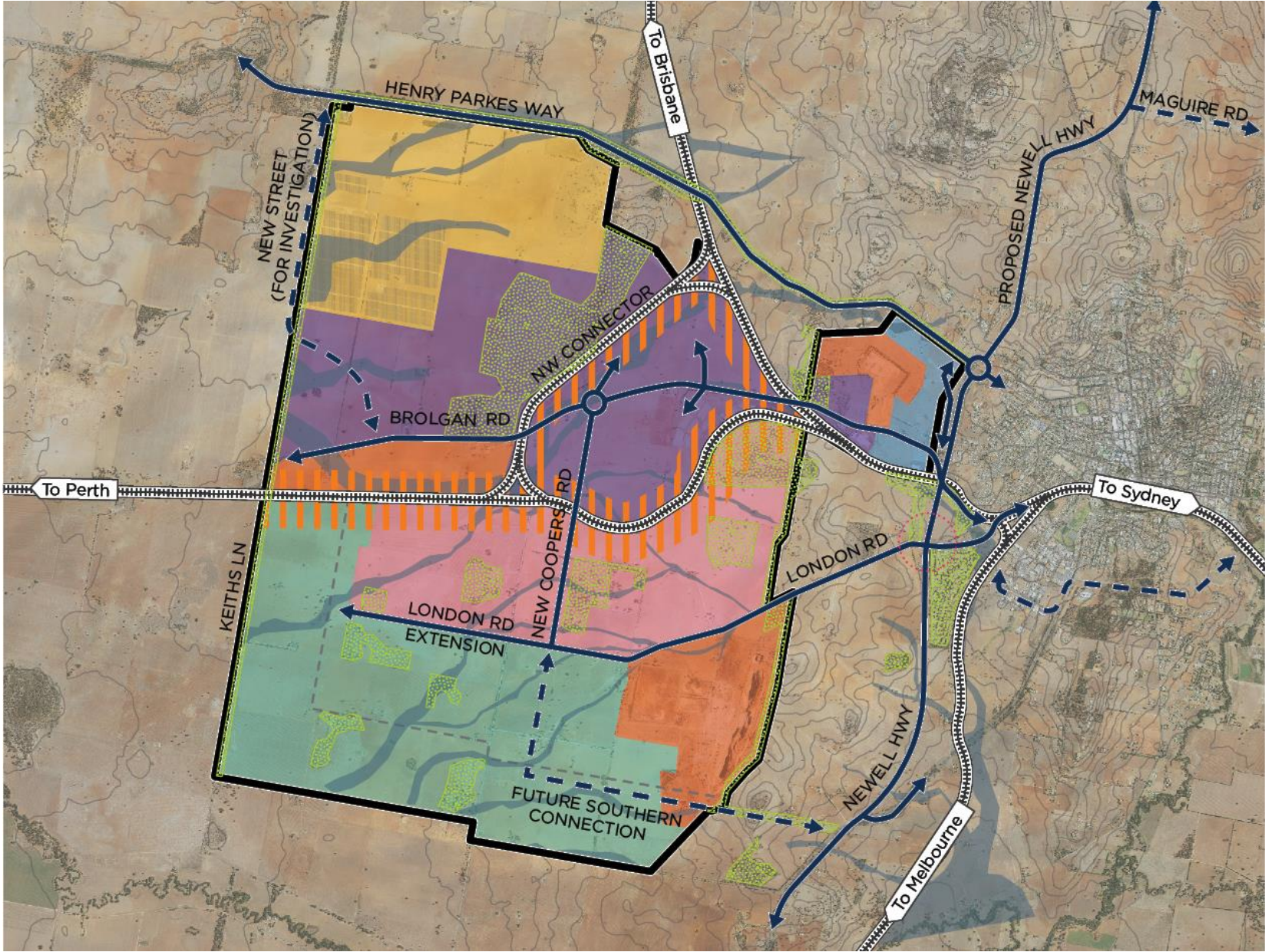
Place-based solution to economic development and are being delivered through the \$4.2 billion Snowy Hydro Legacy Fund

Five elements of Special Activation Precincts



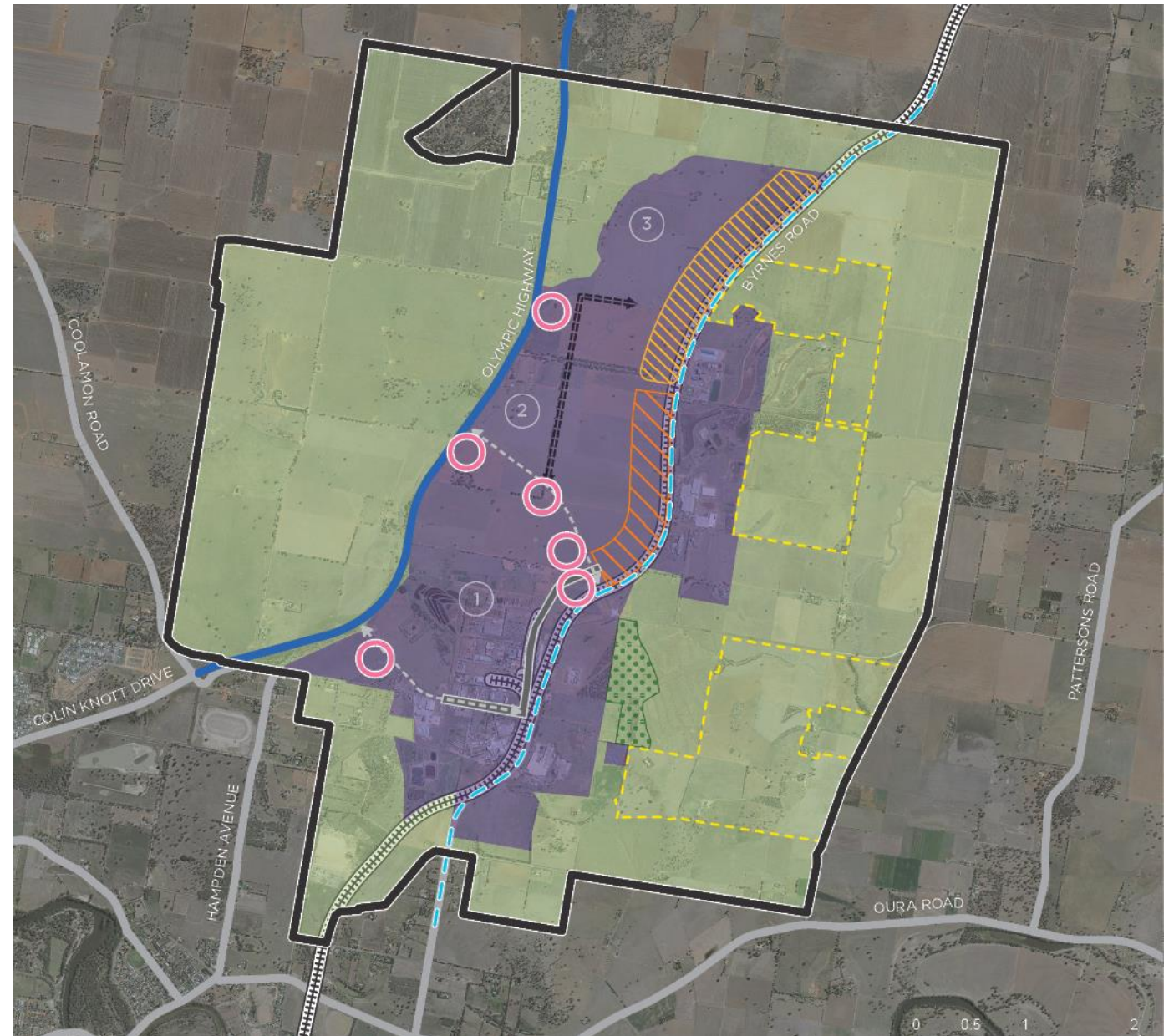
Parkes master plan

-  Special Activation Precinct boundary
-  Solar sub-precinct (664 ha)
-  Regional enterprise sub-precinct (1,115 ha)
-  Resource recovery and recycling sub-precinct (552 ha)
-  Intensive livestock agriculture sub-precinct (1,226 ha)
-  Mixed enterprise sub-precinct (660 ha)
-  Commercial gateway sub-precinct (99 ha)
-  Rail terminals overlay
-  Green infrastructure overlay
-  Stormwater flow paths (existing)
-  New connection
-  Proposed new connection
-  Railway
-  1km buffer zone
-  Future upgrade (for investigation by TfNSW)



Wagga Wagga master plan

-  Special Activation Precinct Boundary (4,506 ha)
-  Regional Enterprise Zone (1,335.6 ha)
-  Agricultural Enterprise Zone (3,170.5 ha)
-  Riverina Intermodal Freight and Logistics Hub (RiFL)
-  Possible areas for future expansion of rail siding infrastructure
-  Land to be reserved for heritage, culture and habitat
-  Local road upgrade
-  Upgrade and augmentation of existing streets: east-west boulevards
-  Major road future upgrade proposed
-  Major road
-  Future infrastructure corridors
-  Solar farms
-  Staging
-  Commercial nodes
-  Railway



An innovation opportunity: sustainability and circular economy – key value proposition for the Precincts



UNIDO

UNIDO Eco-Industrial
Park principles for
certification



Efficiency

Water, energy and
waste efficiencies to
be harnessed across
the precinct



Colocation

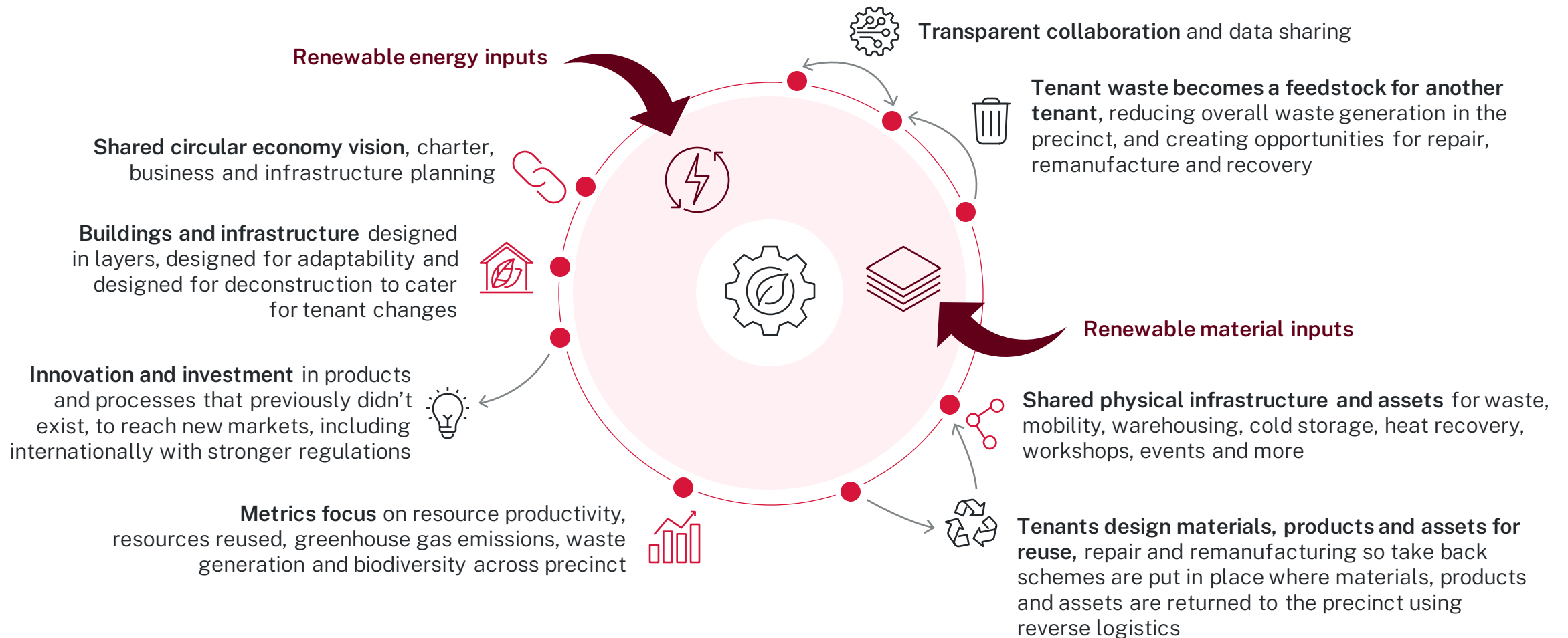
Colocation of land uses
to optimise strategic
benefits and maximise
infrastructure capacity



Accreditation

Infrastructure and
building
sustainability
accreditation

A vision for a circular economy precinct



Circular economy is not an add-on

This strategy is one of three pillars contributing to the Parkes precinct environmental approach.

1



Circular Economy
Strategy

2



UNIDO Eco
Industrial Park
alignment

3



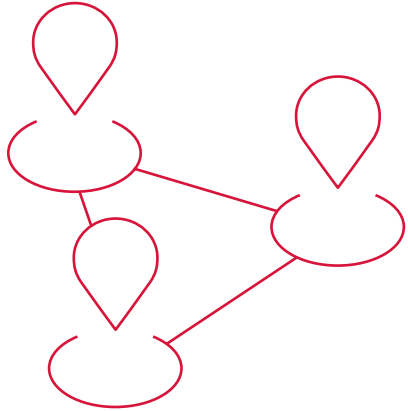
Net Zero
Roadmap



UNIDO EIP definition

“A **community** of manufacturing and service businesses located together on a common property. Member businesses seek **enhanced environmental, economic, and social performance through collaboration** in managing environmental and resource issues.”

Connection and coordination – tenants must “think like a precinct”



Anchor tenant

Anchor tenants and champions are essential for the beginning of the circular economy journey

Approach

The strength of our approach will be in the connections that we make to share our problems and solutions

Connections

Our focus is on new ways of connecting and making those connections more meaningful

Scale

We need connection and coordination at multiple scales – Australia wide and cascading down

Set the strategy for success

Governance

Governance models – fit for purpose

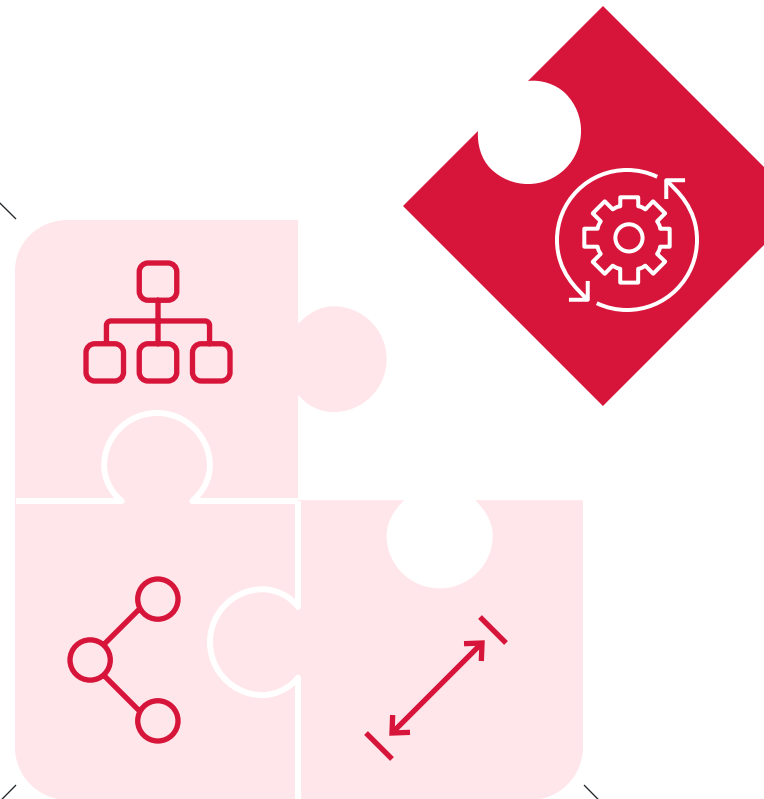
Data frameworks – data collection tailored to SAP businesses and assurance (includes data agreements and digital platform development)

Data sharing – needs to be secure

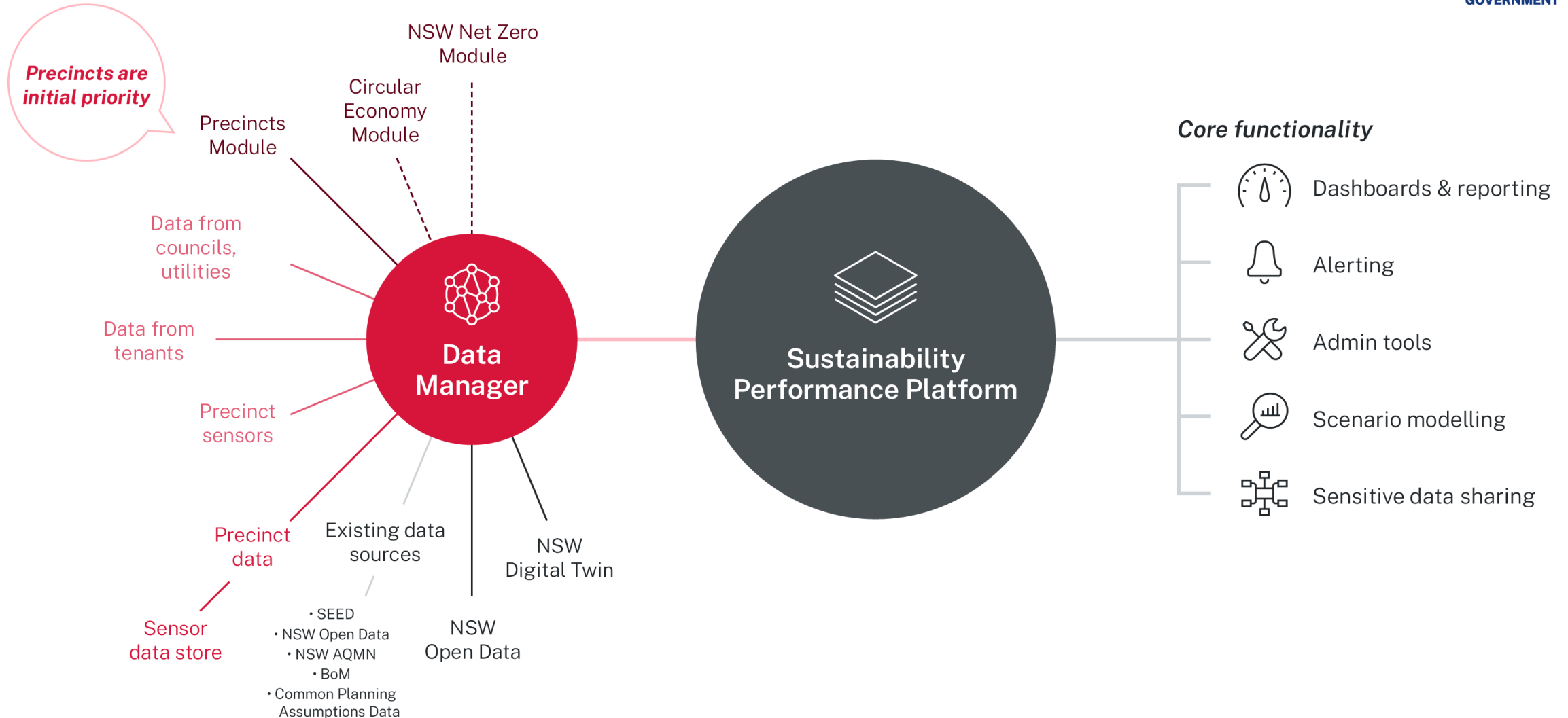
Data frameworks

What scale will we be circular –
business, precinct,
LGA, region, nationally?

Scale



Data frameworks for decision making



Lessons learned - what's been easier?



Setting the vision and finding circular economy champions



Identifying the opportunities for circularity at precinct and regional scale



Setting aside land for shared services and resource sharing – infrastructure to support circularity



Focusing on recycling and energy as the ‘gateways’ to a circular approach

Lessons learned - what's been harder?



Economics of circularity still being questioned

- Shared infrastructure – upfront investment
- Recycled materials availability and waste aggregation
- Audit and compliance



Large footprint potentially makes some circularity a challenge – eco industrial resource sharing



Lack of ability to aggregate waste to develop projects that can secure finance

Lack of standard Australian metrics for CE – how do we know we are on a level playing field with what we measure?

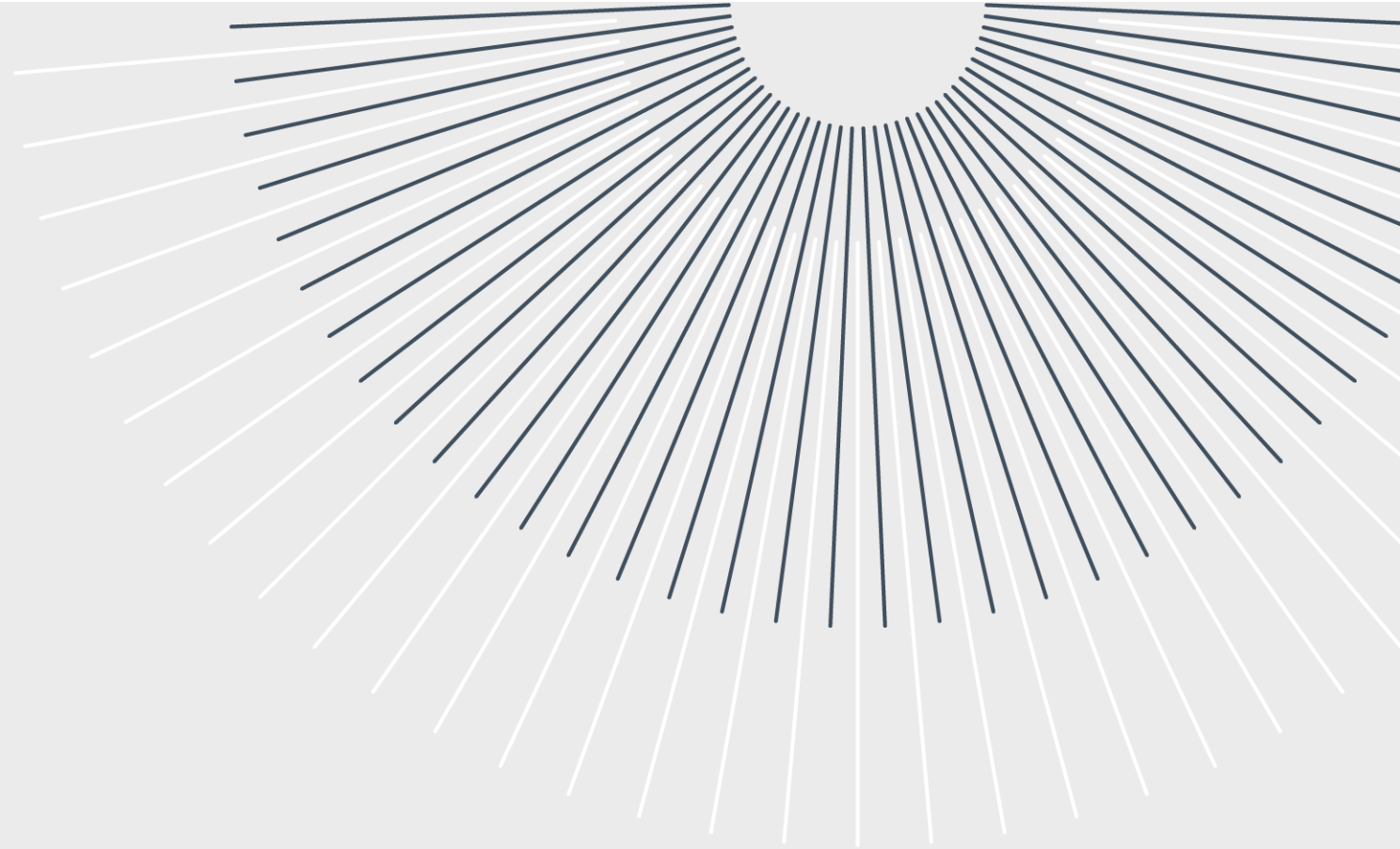


Having multiple anchor businesses means that the circular possibilities are too numerous – need to focus on a few opportunities at a time and build as we go

Circular precincts



Special Activation Precincts



Azaria Dobson

Acting Executive Director

Planning and Infrastructure

Regional Growth NSW Development Corporation